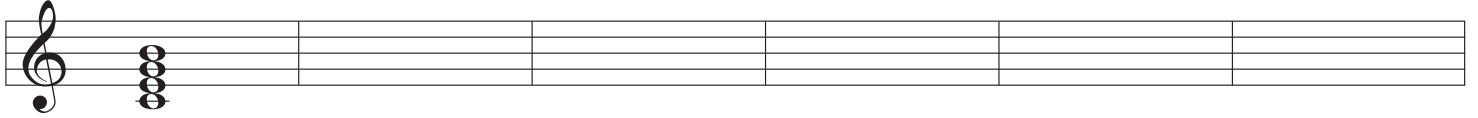


Écrire les accords de 4 sons ci-dessous (ne pas dépasser la 7^e).

1

C Δ

Dm7

D \flat 7A \flat Δ C \sharp \emptyset D $^\circ$ 

correction
du 1er accord

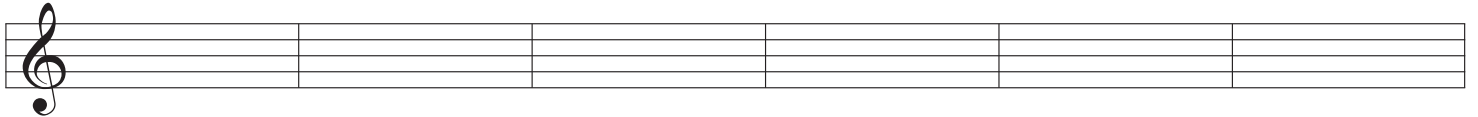
A7

A \sharp $^\circ$ A Δ A $^\circ$ C \sharp m7B \flat Δ 

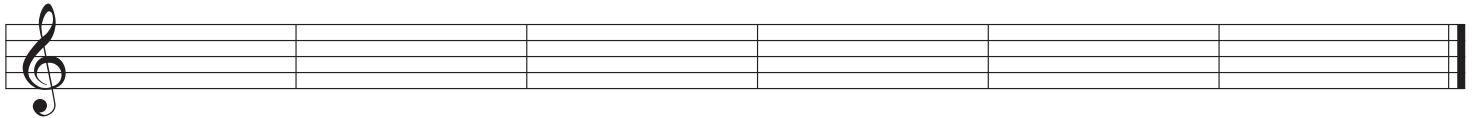
2

C \sharp $^\circ$ A \flat m7G \sharp $^\circ$

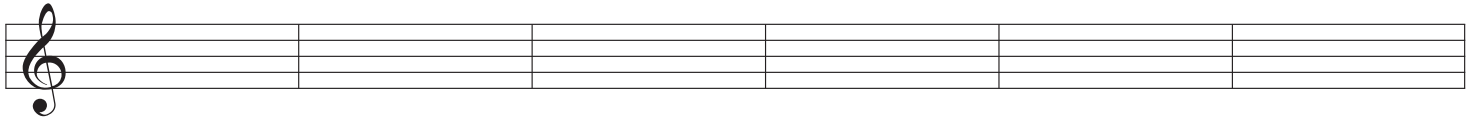
C7

A \flat 7C $^\circ$ F \sharp Δ B \flat 7A \sharp \emptyset E \flat m7

G7

D \sharp $^\circ$ 

3

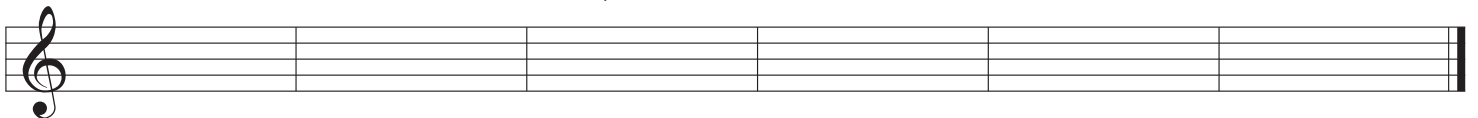
D Δ C \emptyset D \emptyset B $^\circ$ G Δ G \sharp \emptyset 

Cm7

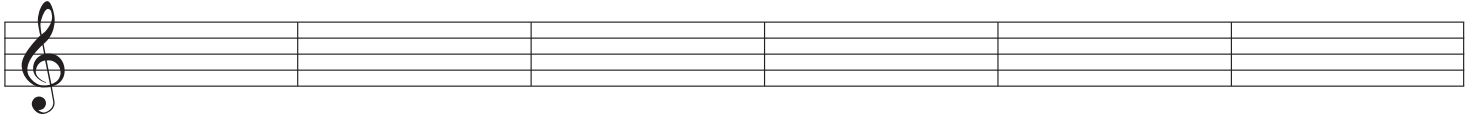
D7

F \sharp 7

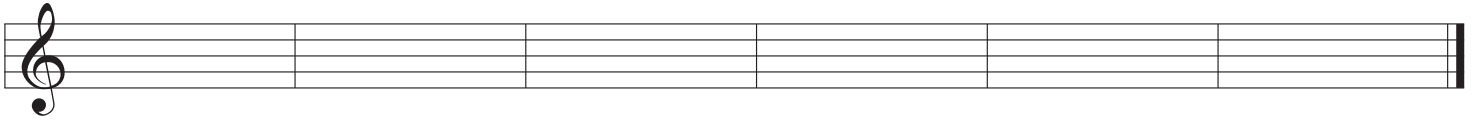
Gm7

E \flat \emptyset D \flat Δ 

4 A \emptyset G \emptyset Am7 G \flat 7 E $^{\circ}$ G \flat Δ



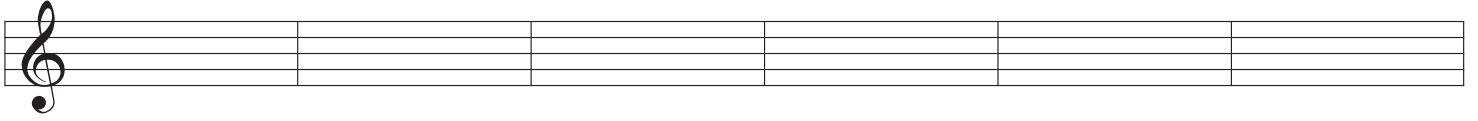
E \flat 7 E \emptyset B Δ B7 F \sharp m7 G $^{\circ}$



5 E Δ F7 F \sharp \emptyset F $^{\circ}$ Em7 B \emptyset



F Δ B \flat m7 F \sharp $^{\circ}$ Fm7 F \sharp F \emptyset



E \flat Δ Bm7 E7 G \sharp 7 C \flat 7 G \sharp m7

